

UNIVERSITY OF MINNESOTA

EXTENSION

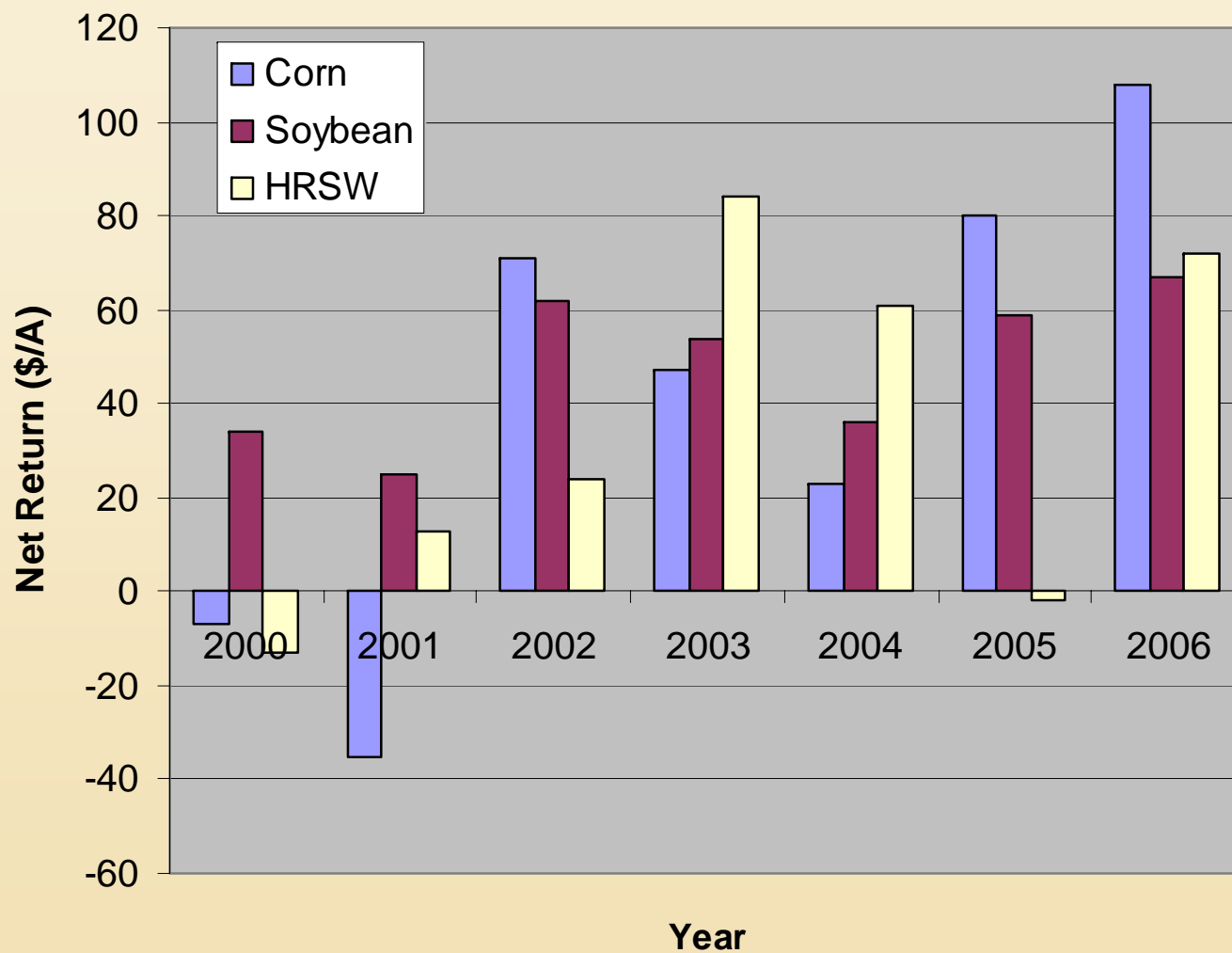
## Wheat Rotation Economics

Bill Craig

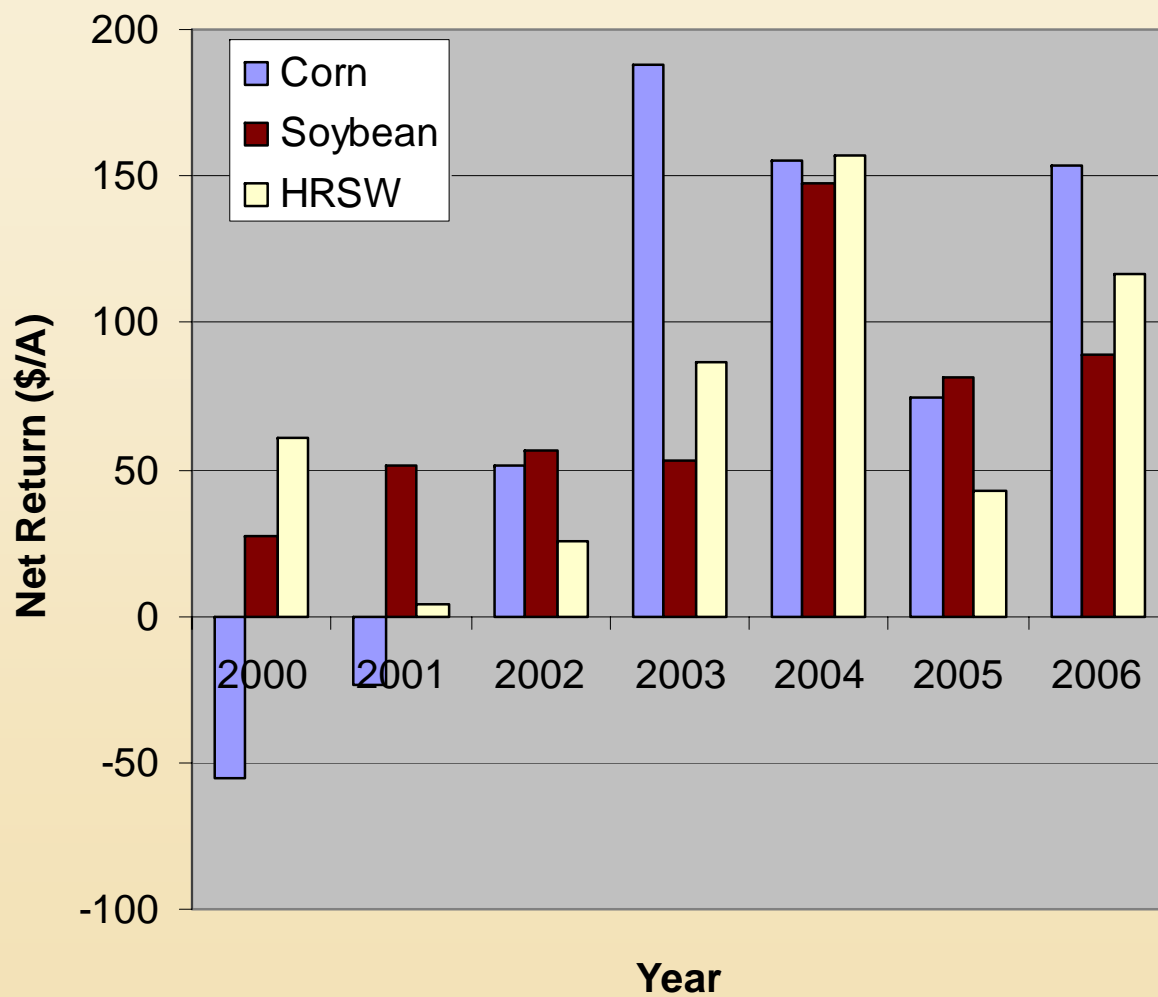
U of M Regional Extension Educator-  
Agricultural Business Management  
Extension Regional Center-Crookston



# West Central FBM Data



# South Central FBM Data



# FBM Data

- What the data tells us:
  - It appears that HRSW is economically viable across MN, but probably as volatile as corn.
- What the data doesn't tell us:
  - Sample size/sampling error.
  - Rotational effects/considerations
  - Future



# Effect of Crop Rotation on HRSW

| Previous Crop | Conventional Tillage<br>Wheat Yield |                        | No-Till<br>Wheat Yield |                        |
|---------------|-------------------------------------|------------------------|------------------------|------------------------|
|               | Wheat Yield                         | Wheat on Previous Crop | Wheat Yield            | Wheat on Previous Crop |
|               | (bu/A)                              | (%)                    | (bu/A)                 | (%)                    |
| Wheat         | 33.8                                | 100                    | 33.3                   | 100                    |
| Soybean       | 45.3                                | 134                    | 44.9                   | 135                    |
| Sugar beet    | 40.8                                | 121                    | 38.8                   | 117                    |
| Sunflower     | 39.3                                | 116                    | 39.1                   | 117                    |
| Corn          | 38.6                                | 114                    | 37.3                   | 112                    |
| Flax          | 38.0                                | 112                    | 37.5                   | 113                    |
| Barley        | 37.0                                | 109                    | 36.0                   | 108                    |

Source: NDSU

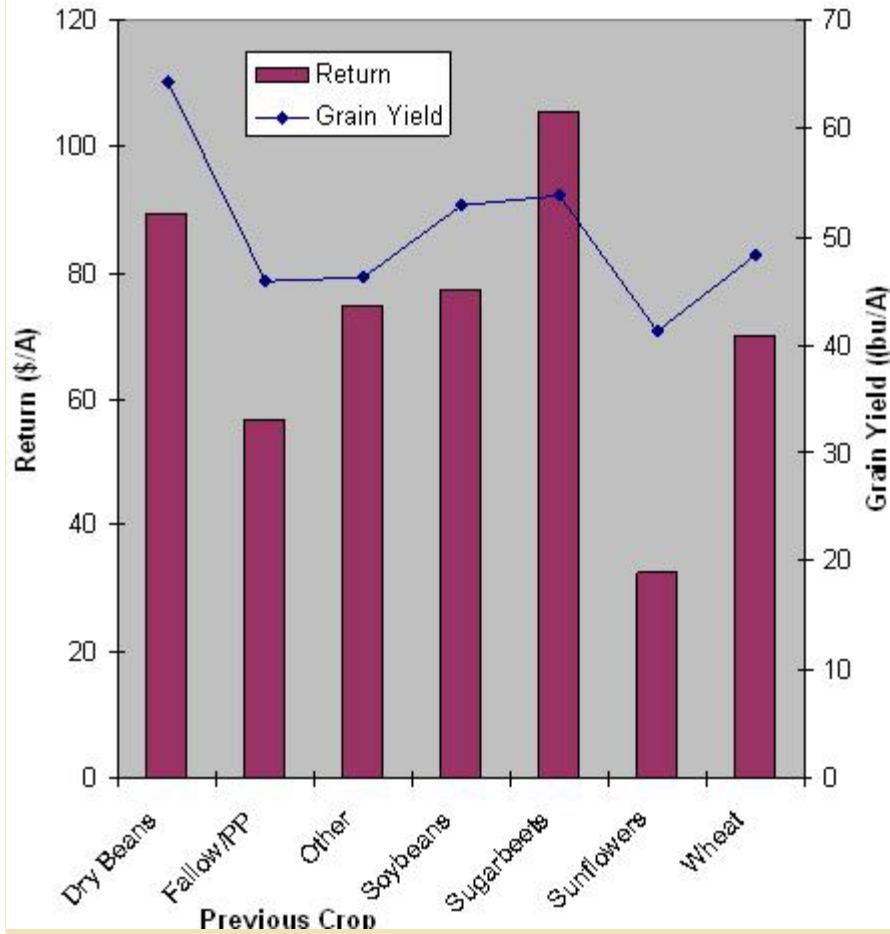
# Rotational Studies

- What the data tells us:
  - Crop rotations work - there are advantages to include SGs in rotations, even in a CS or CC world
- What the data doesn't tell us:
  - No comprehensive enterprise/systems analysis:
    - Economies of scale
    - Labor film
    - Input cost differentials



# Preliminary Northwest FBM Rotational Data

## Spring Wheat



## Soybean

